

# VisNet® Detect Pro

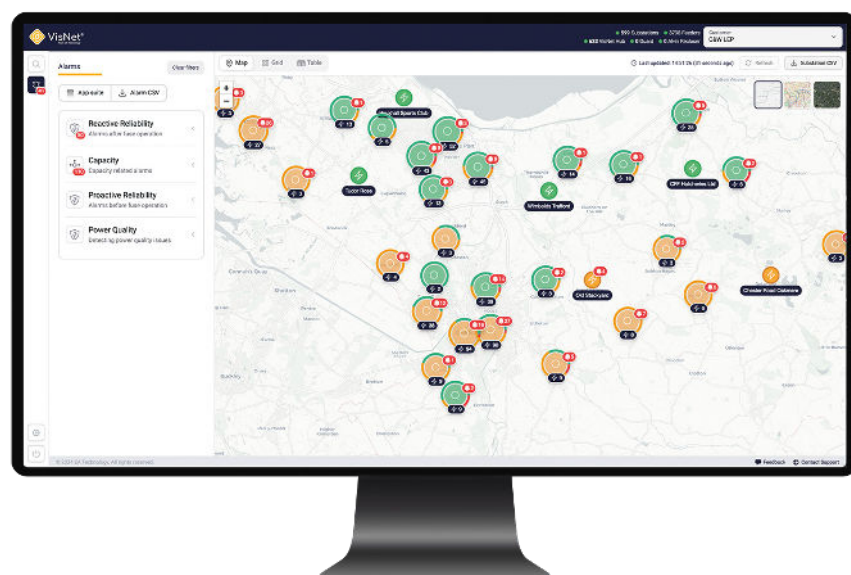
## Turn data into actionable insights

With 24/7 web-based access, VisNet® Detect Pro is designed to be a window into all your captured and calculated data.

### How it works

Having thorough data is essential for network operation, but without evaluation, it's useless. We must unlock data to deliver meaningful insights and really benefit from our learnings. VisNet® Detect Pro fills that need.

VisNet Detect Pro's intuitive interface is designed to facilitate efficient visualisation. It enables you to rapidly identify any network difficulties and warns clients via SMS. You can even delve further into the specifics to determine the actual cause of the issue. Get a better understanding of how your network functions and take charge of any problems that may occur.



### Features

- Intuitive map-based user interface.
- Clear dashboard view to highlight areas of intervention.
- Detailed view of real-time and historical data available.
- Modern web-API architecture.
- Continuous development and release cycle.
- New engineering insights are added on a regular basis.
- User authentication for access control.
- Configurable privilege levels for users and administrators.
- Data download and export options.
- Fully flexible offering that adapts to accommodate client specific hosting needs.

**Book a demonstration or find out more**

**EA Technology Australia**  
381 MacArthur Avenue  
Hamilton QLD, 4007  
**PUBLIC**

**t** +61 (0) 7 3256 0534  
**e** [au.sales@eatechnology.com](mailto:au.sales@eatechnology.com)  
**w** [www.visnet.tech/en-au/](http://www.visnet.tech/en-au/)  
**V1 / AUS / 20.05.25**